


# Business Support In Perth and Kinross

## Business Support Overview



### Key Partners

PKC Business, Place and Investment Team  
PKC Skills and Employment Support Team  
Business Gateway  
GrowBiz  
Scottish Enterprise  
Perth Ideas Centre



### Membership Organisations

Perthshire Chamber of Commerce  
Federation of Small Businesses

## Advice and Support Offered



### BUSINESS OPERATIONS

- Securing Commercial Premises and / or Land
- HR, Recruiting and Retaining Staff
- Risk Management and Business Continuity
- Supply Chain
- Cash Flow and Managing Finances
- Legal Advice

### STRATEGY AND PLANNING

- Start-Up Advice
- Business Funding Advice
- Marketing Expertise
- Digital Skills Building

### SECTOR ASSISTANCE

- Rural Business Support
- Independent Retailers and Restaurants
- Food and Drink Sector
- Tourism Sector
- Buying a Franchise

### BUSINESS GROWTH

- Exporting
- Preparing for Expansion
- Relocation Within Perth and Kinross
- Franchising Your Business
- Angel Investing

# Business Support in Perth and Kinross

In today's ever-changing economic and social landscape finding the support and advice that is right for your company is crucial for business resilience and continued, long-term growth.

Perth and Kinross Council offers several business support functions for companies of all sizes and at all stages, as well as administering funding opportunities targeted at stimulating economic growth.

Services include dedicated support on improving local employability, sector specific advice for tourism, food and drink and retail, and advice around attracting inward investment.

This is achieved through a number of long-standing, successful partnerships with local business support providers and membership organisations.

Should you have any other business support requirements, please contact [businessdevelopment@pkc.gov.uk](mailto:businessdevelopment@pkc.gov.uk)

## Contents

Business Support Overview.....	2
Local and National Funds .....	4
Business Support Within Perth and Kinross Council .....	7
Business Support Partners .....	10
Membership Organisations .....	12

## Local Authority Delivered Funds

---

### Beyond Scotland Market Development Grant

This grant provides specific support to Perth and Kinross businesses which will enable them to expand into new markets overseas or into other parts of the UK (excluding Scotland). This competitive grant offers funding of up to £3,000 (50% match funded) towards eligible costs. Examples of eligible costs include:

- Transport and accommodation for a specific business event or initiative
- Foreign exhibition and trade show attendance, stand costs and marketing materials
- New product development where this is specifically for the overseas market
- Consultancy services associated with overseas trading e.g. legal costs

Contact [businessdevelopment@pkc.gov.uk](mailto:businessdevelopment@pkc.gov.uk) for further details.

---

### Adapt Your Property Grant

The Adapt Your Property Grant assists business and property owners to upgrade and repurpose vacant commercial properties in order to bring them back into use as commercial, community or residential premises to help implement sustainable economic growth.

Property owners or tenants can apply for grant assistance of up to 50% of the cost of the project to a maximum grant award of £75,000.

Priority for support will be given to projects which demonstrate how they will enhance/contribute to:

- local economy and business
- local placemaking and townscape
- delivering wider community benefit

Contact [vacantproperty@pkc.gov.uk](mailto:vacantproperty@pkc.gov.uk) for further details.

### £150 million Investment Fund for Scotland

The Investment Fund for Scotland aims to drive sustainable economic growth by supporting innovation and creating local opportunity for new and growing businesses across Scotland.

The Investment Fund for Scotland offers a range of commercial finance options with smaller loans and debt finance from £25,000 to £2 million and equity investment up to £5 million. The fund covers the whole of Scotland, including rural, coastal and urban areas.

[british-business-bank.co.uk](http://british-business-bank.co.uk)

### Scottish Venture Capital Fund

The Scottish Venture Fund invests in high growth potential, early-stage companies from start-up/spin-out, seeking funding to develop innovative products/services/business models and/or create or develop new markets.

Scottish Enterprise is a 'gap' funder, so businesses should seek to to maximise private sector investment before making an approach. Scottish Enterprise typically provides from £100,000 up to £2 million, as part of a total deal size typically ranging from £200,000 to £10 million.

[scottish-enterprise.com](http://scottish-enterprise.com)

### Regional Selective Assistance Funding

The Regional Selective Assistance Fund is a form of discretionary grant designed to encourage capital investment and job creation in assisted areas of Scotland, classified as Tier 2 and 3. Perth and Kinross is categorised as a Tier 3 area. RSAF can typically support up to 35% of the eligible costs for a small/medium sized enterprise (SME) and 15% of the eligible costs for a large enterprise.

Projects must last between 6 and 36 months, and the minimum grant considered is £150,000.

[scottish-enterprise.com](http://scottish-enterprise.com)

## PKC Future Works – Employer Funding Offers

PKC Future Works offers a range of funding and recruitment support to help local employers create inclusive, sustainable job opportunities.

### Health, Disability and Reserved Benefits Fund

Up to £8,000 per business

This funding supports employers who can offer flexible, inclusive employment to individuals with a disability or health condition, or those receiving reserved benefits who are at risk of long-term unemployment. Employers must offer the Real Living Wage to all employees, including Modern Apprentices.

---

### Parental ERI

Up to £8,000 per business

Available to employers who can support eligible parents into flexible and inclusive employment. Businesses must be able to offer the Real Living Wage to the potential candidate and flexibility to accommodate parental responsibilities.

---

### Rural Employment Incentive

£5,000 per business

Supports employers who can help residents living in rural Perthshire move into employment by offering sustainable and accessible job opportunities. This fund is in high demand due to limited spaces.

---

### Rural Skills Training and Mentoring Fund

£5,000 per business

Designed for employers in rural Perthshire operating within the rural skills sector. Funding can be used to cover training and mentoring costs for employees who have started employment within the last three months.

---

### Free Vacancy Management Service

The Future Works team also offers a free vacancy management service, supporting employers by:

- Matching suitable candidates from our Employability Service
  - Pre-screening applicants
  - Creating and promoting job adverts
  - Sharing vacancies through a wide employability partner network
- 

Employers do not need to access any of the above funding to receive this support.

Contact [SkillsandEmployment@pkc.gov.uk](mailto:SkillsandEmployment@pkc.gov.uk) for further details.

## PKC Business, Place and Investment Team

The PKC Business, Place and Investment Team is responsible for business development, the growth of the local economy, and inward investment through the Invest in Perth brand.

The team's key priority is to promote the area as a first-choice destination for business start-ups, head office relocations, and business expansion.

Offering targeted guidance for businesses seeking to operate or expand in the area, the team can assist you in securing a commercial property, navigating funding and incentive schemes, and in accessing new markets in the UK and overseas.

The team also works closely with partner organisations at a local, national and international level and can offer the introductions you require to grow your business.

[investinperth.co.uk](http://investinperth.co.uk)  
[businessdevelopment@pkc.gov.uk](mailto:businessdevelopment@pkc.gov.uk)



## The Angel's Share

The Angel's Share supports the growth of innovative businesses. The programme provides a platform for entrepreneurs to pitch their business idea to credited investors with a view to securing investment.

Specialist support and expertise ensures participants are supported throughout the process of preparing for investor-readiness, and ultimately delivering a polished pitch at the programme's live events.



## Perth City and Towns

Overseeing the marketing of Perth City and the surrounding towns, large events and footfall drivers, as well as tourism initiatives for the area as a whole, Perth City and Towns is the promotional arm of Perth and Kinross Council in terms of residents and visitors.

Offering promotional opportunities for retail and hospitality businesses, and visitor attractions via a multi-platform marketing strategy and vibrant, varied programme of events, the team is the first point of contact within PKC for this important sector.

The team manages the Perth City and Towns channels, [perthcity.co.uk](http://perthcity.co.uk) and represents the area on the Tay Countries Tourism Partnership.

[perthcity.co.uk](http://perthcity.co.uk)  
[placedevelopment@pkc.gov.uk](mailto:placedevelopment@pkc.gov.uk)



## Perthshire Tourism Partnership (PTP)

The PTP was established to bring together public sector organisations and tourism groups based in Perthshire to discuss strategic themes relating to tourism.

The group is made up of local tourism associations, collaborative groups, public sector agencies including VisitScotland, Historic Environment Scotland, National Trust for Scotland, and Perth and Kinross Council, who are the main point of contact for the group's activities.

The group offers significant industry support including:

- Programming of the Perthshire Talks Tourism industry events and monthly member meetings.
- Managing the private Perthshire Facebook group, which has over 500 members.
- Links to Industry Relationship Managers at VisitScotland and other third party agencies.

Contact Suzanne Cumiskey  
Email: [SCumiskey@pkc.gov.uk](mailto:SCumiskey@pkc.gov.uk)



---

## PKC Skills and Employment Initiatives Team

The Skills and Employment Support Team offers a comprehensive employability service designed to support business growth by enhancing workforce skills and development opportunities. Through a turnkey approach, the team supports both employers and job seekers, helping businesses with job creation, recruitment, and staff retention, while also offering expert advice on training, funding, and employment schemes.

The team can assist with vacancy management by matching Skills and Employment clients to suitable roles, creating and promoting job adverts for local vacancies, and sharing opportunities through a network of employability partners. Working closely with local employers, the team also delivers a range of funding offers to support businesses in creating new jobs and upskilling individuals across Perth and Kinross.

[pkc.gov.uk/article/15218/Skills-and-employment-initiatives](https://pkc.gov.uk/article/15218/Skills-and-employment-initiatives)

Contact [skillsandemployment@pkc.gov.uk](mailto:skillsandemployment@pkc.gov.uk) for more details





“Our turnover is up 23% on last year and the number of clients from North America has increased by 15% since our funded trade mission.”

## Raymond McIntosh, McIntosh Tours

Beyond Scotland Market Development  
Grant recipient



## Business Support Partners

Organisations offering local advice to businesses in Perth and Kinross.

---

### Business Gateway, Perth and Kinross Team

Business Gateway offers free support and advice to businesses of all sizes, at every stage of the business journey. Whether you are starting, growing, adapting, or focused on surviving and strengthening your business, the Perth and Kinross team provides tailored guidance to help you move forward with confidence. Based at the Creative Exchange in Perth City Centre, the team works closely with local businesses to support sustainable progress, from early ideas through to development and expansion.



Get in touch to access local expert advisers and receive one to one advice. Businesses can also benefit from specialist consultants and leading experts from across the Business Gateway network, bringing wider insight and expertise to support informed decision making at every stage.

[bgateway.com/local-offices/perth-and-kinross](http://bgateway.com/local-offices/perth-and-kinross)

Telephone: 01738 448310

Email: [perthandkinross@bgateway.com](mailto:perthandkinross@bgateway.com)

---

### GrowBiz

GrowBiz provides support for enterprises in Perth and Kinross. Its services focus on small and micro businesses and self-employed people, and particularly those in rural areas who face a range of unique challenges. GrowBiz offers both individual support and a sense of community through group support, from advisors who have all run small businesses and know the practical and emotional skills needed to thrive.



- 1-to-1 support and mentoring
- Peer-to-peer learning and events
- Sector groups for food and drink, social enterprise, creatives and young people
- Advice on funding support

[growbiz.co.uk](http://growbiz.co.uk)

---

### Scottish Enterprise

As the national economic development agency, and non-departmental public body of the Scottish Government, Scottish Enterprise supports businesses of all sizes and from start-up to established.



- Account Management – tailored specialist support for product/services, process and workplace innovation, digital, sustainability, and international trade.
- SME Growth Service – Specialist support for companies with projects to achieve more quality jobs, increased innovation, productivity, investment, and exports.
- Tailored funding packages, grants and loans to facilitate growth depending on the size of the business.

[scottish-enterprise.com](http://scottish-enterprise.com)

### Perth Ideas Centre

The Perth Ideas Centre (PIC) within Perth's Creative Exchange presents a wealth of opportunities and support for individuals and SMEs working in the creative, digital, and technical sectors.

Offering a range of technical and digital equipment to conceive and test ideas, and to find solutions to commercial and civic challenges, this purpose-built space has been designed to support creative thinking, and to inspire entrepreneurship and business growth.

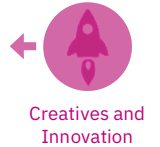
In addition to this, the PIC also provides a flexible space for seminars, meetings and workshops centred around innovation, skills development, and economic, social, and cultural growth.

Support is free of charge but must be booked in advance.

- Cutting-edge technology
- Creative software
- Flexible meeting and event space
- Ongoing education and skills development programmes

If you are in the creative industries, or are an SME developing an idea, project, business or product and would like to find out more, please email:

perthideascentre @pkc.gov.uk



## Membership Organisations

Connect with the wider business community.

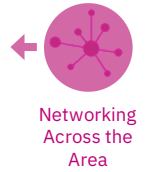
---

### Perthshire Chamber of Commerce

Perthshire Chamber of Commerce (PCC) is an independent, non-profit making, non-political business membership organisation. Its focus is on championing the issues that matter to its members, helping promote and protect the interests of local businesses, and ensuring the economic future for the communities of Perthshire.

Perthshire Chamber caters for all sizes, from sole traders up to some of the area's largest international employers, for all sectors, and from start-ups to those already well established including both rural and urban. Perthshire Chamber is the local part of Scottish Chambers of Commerce, Scotland's largest and most influential business-to-business network.

[perthshirechamber.co.uk](http://perthshirechamber.co.uk)  
[info@perthshirechamber.co.uk](mailto:info@perthshirechamber.co.uk)



### Federation of Small Businesses

FSB is the UK's largest grassroots business campaigning group, which ensures the voice of small business is heard at the highest level across the UK. It provides multiple business services and products to its members including a legal protection scheme, PR and crisis management, cyber protection, debt recovery and health and safety advice.

[fsb.org.uk](http://fsb.org.uk)  
[mike.duncan@fsb.org.uk](mailto:mike.duncan@fsb.org.uk)



---

Should you have any business support requirements that you feel have not been addressed in this document, please contact [businessdevelopment@pkc.gov.uk](mailto:businessdevelopment@pkc.gov.uk) and a member of the team will be in touch.



“The Adapt Your Property grant contributed significantly to the conversion of an underused space into something that directly supports young people and in turn, the wider community in Perth and Kinross.



The Y Centre will become a cornerstone of youth support in Perth and a beacon of regeneration in the city centre.”

**Jill McGrath, CEO  
YMCA Tayside**

YMCA Tayside were the recipients of a £50,000 ‘Adapt Your Property Grant’ to support the redevelopment of two long-vacant and derelict buildings in the heart of Perth’s Conservation Area.



# Invest in Perth

As the inward investment arm of Perth and Kinross Council,  
Invest in Perth is committed to driving economic growth  
through continuous business support.

[investinperth.co.uk](http://investinperth.co.uk)